

Laminating Pouches – Recycled Content

LAMINATING POUCH - A3/A4/A5/A6 MATT

Light Duty

Features:

- Made with 50% recycled content (35% minimum post-consumer, 15% pre-consumer) - providing perfect lamination with reduced environmental impact
- Pack of 100 laminating pouches, Matt finish
- A3/A4/A5/A6 size
- Light Duty - for use at the 75/80 micron laminator setting



Specifications

Segment	Laminating Pouches – Recyled Content	
Size	A3 / A4 / A5 / A6	
Pouch Thickness (mic)	Light	
Finish	Matt	
Best Used For	Notices – Photos	
Main Materials	PET - EVA	
Recycled Content	50%	
Quantity per Pack	100	
Quantity per Outer	A3 - 5	A4 / A5 / A6 - 10
Country of Origin	China	



Size	A3		A4		A5		A6	
Product dimensions	42.6x30.3x0.1 (cm)	0.02 kg	30.3x21.6x0.1 (cm)	0.01 kg	21.6x15.4x0.1 (cm)	0.002 kg	15.4x11.1x0.1 (cm)	0.001 kg
Retail Dimensions	43.2x30.8x1.8 (cm)	1.95 kg	30.7x22.0x1.9 (cm)	0.96 kg	22.4x16.0x1.8 (cm)	0.50 kg	16.1x11.9x2.8 (cm)	0.26 kg
Master Dimensions	9.0x32.2x45.2 (cm)	9.8 kg	9.0x45.3x32.2 (cm)	9.6 kg	33.0x23.5x9.0 (cm)	5.0 kg	24.3x17.3x9.0 (cm)	2.6 kg

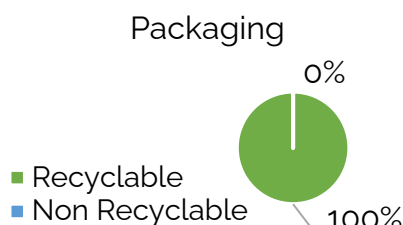
POUCH A3 LIGHT MATT - 100PK	100143436	UPC: 043859813865	SCS: 10043859813862
POUCH A4 LIGHT MATT - 100PK	100143435	UPC: 043859813872	SCS: 10043859813879
POUCH A5 LIGHT MATT - 100PK	100143437	UPC: 043859813841	SCS: 10043859813848
POUCH A6 LIGHT MATT - 100PK	100143438	UPC: 043859813858	SCS: 10043859813855

Laminating Pouches – Recycled Content

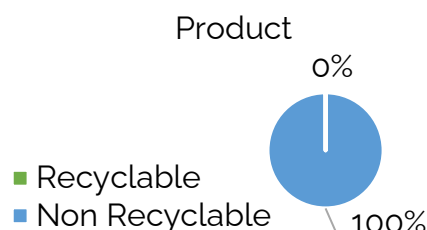
LAMINATING POUCH - A3/A4/A5/A6 MATT

Light Duty

Recyclability:



Packaging Recyclability
Percentage of the packaging by weight that can be sent for recycling

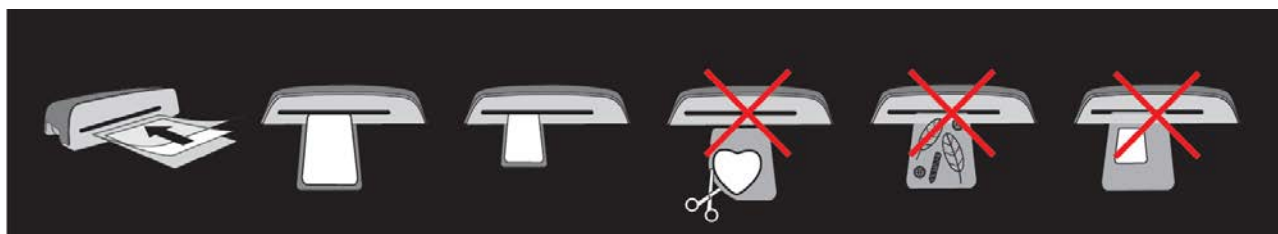


Product Recyclability
Percentage of the product by weight that can easily be separated and sent for recycling

Other information:

Support: For product related questions or further information, our dedicated Customer Service team can be reached at our freephone number 00800 1810 1810 for any questions.

Tips:



- **DO** ensure the document is centred against the sealed edge.
- **DO** use pouches designed for use at the appropriate settings
- **DO** ensure the pouch enters the machine sealed edge first. Use the entry markings as a guide
- **DO NOT** trim the pouch before laminating
- **DO NOT** laminate sharp or metal objects
- **DO NOT** use an incorrect pouch size for the document